

NOTE:

SUP. APPARTAMENTO: 60,77 mq

SUP. BALCONE: 17,30 mq

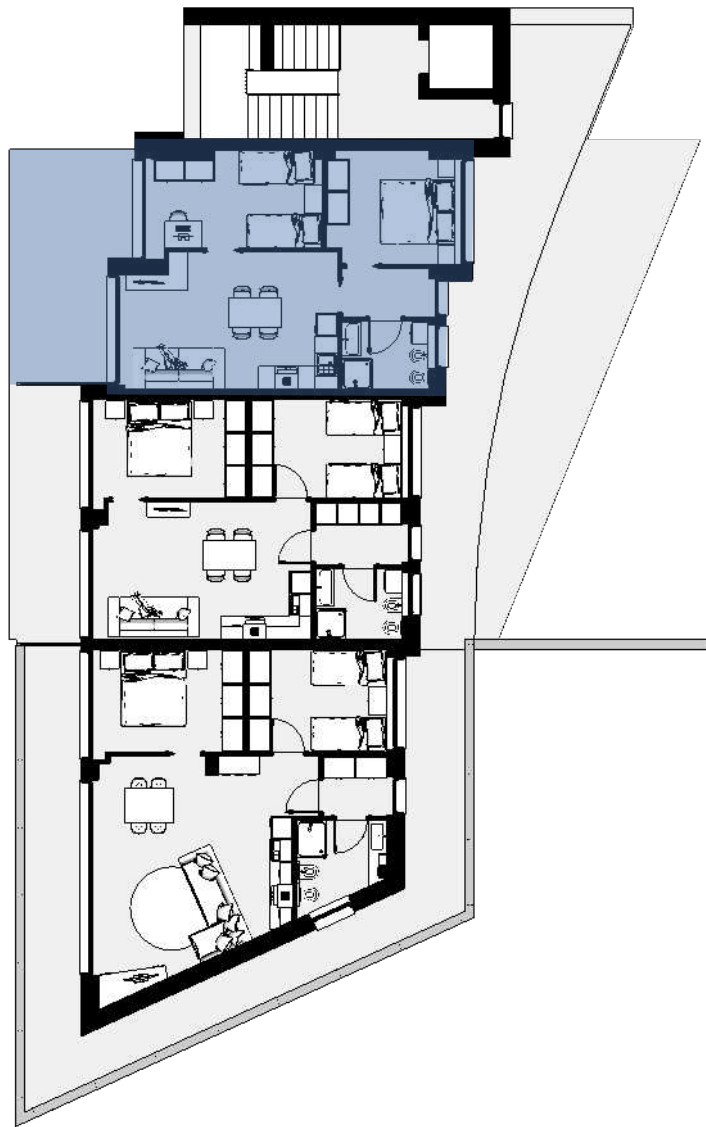
SUP. COMMERCIALE TOTALE: 69,42 mq



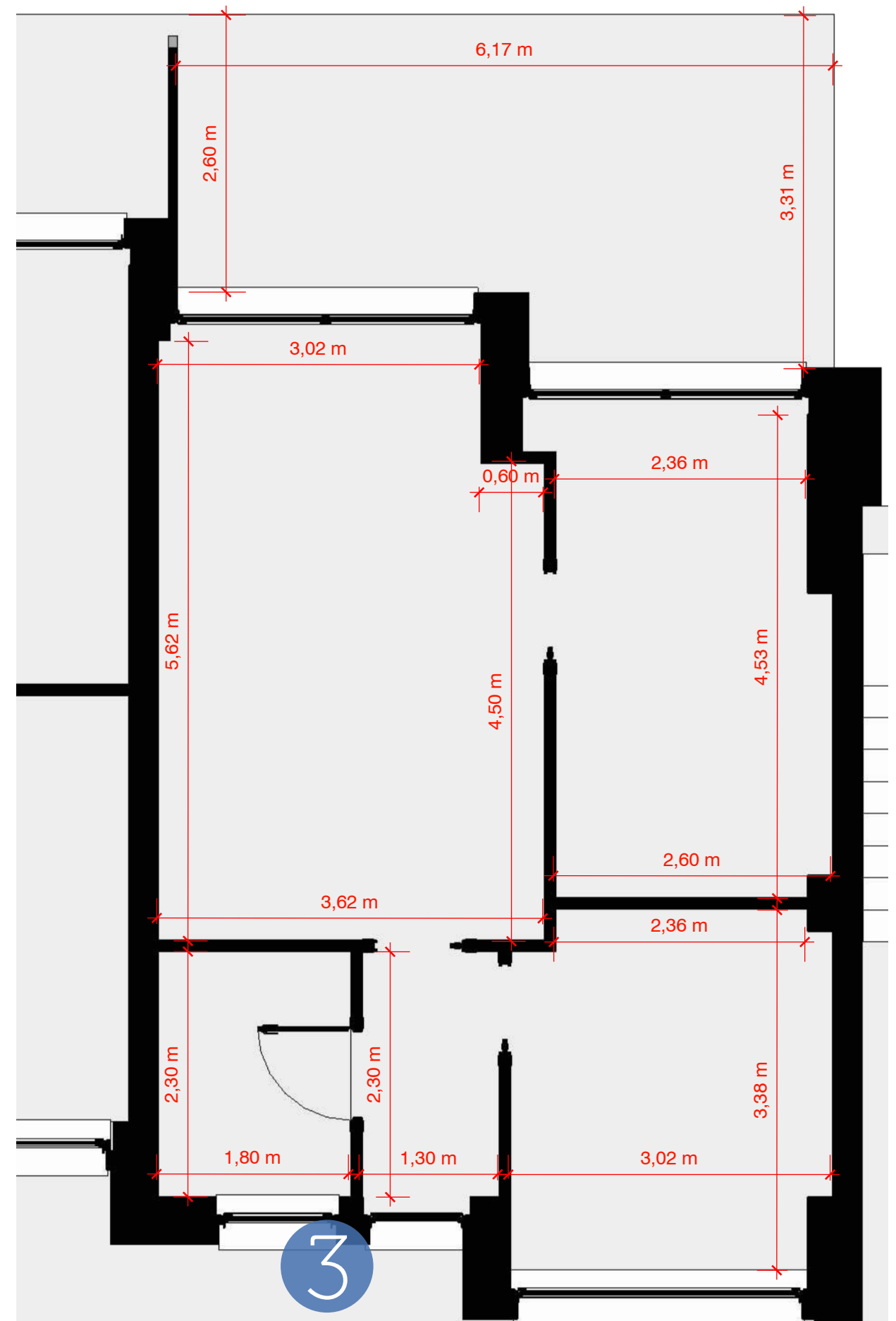
Pianta arredata
scala 1:50



Pianta piano terra
scala 1:200



Pianta quotata
scala 1:50



VISTE DELL'APPARTAMENTO:

Soggiorno



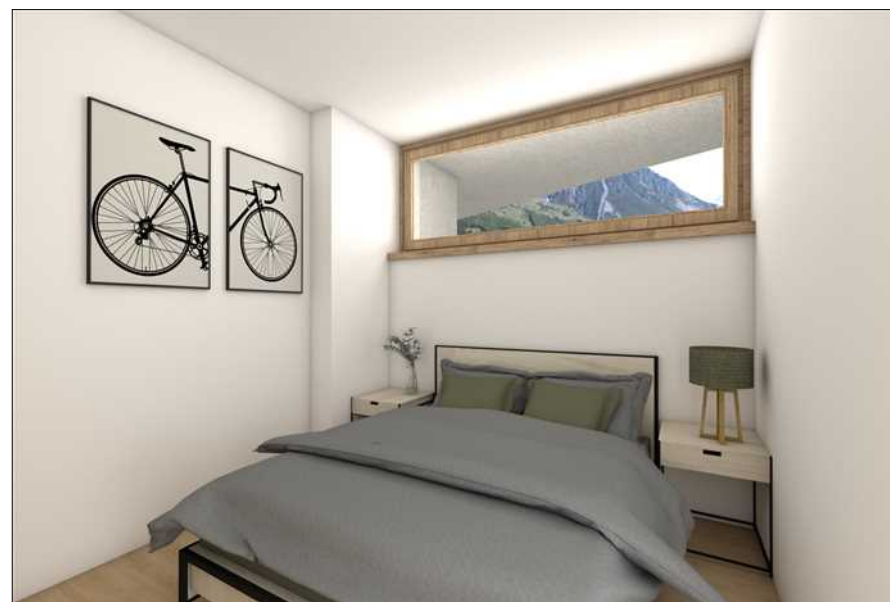
Cucina



Bagno



Camera matrimoniale



Camera doppia

